

THIS INSTRUMENT WAS PREPARED BY
 DAVID P. LINDLEY, PLS
 OF
CAULFIELD and WHEELER, INC.
 ENGINEERS - PLANNERS - SURVEYORS
 7900 GLADES ROAD, SUITE 100
 BOCA RATON, FLORIDA 33434 - (561)392-1991

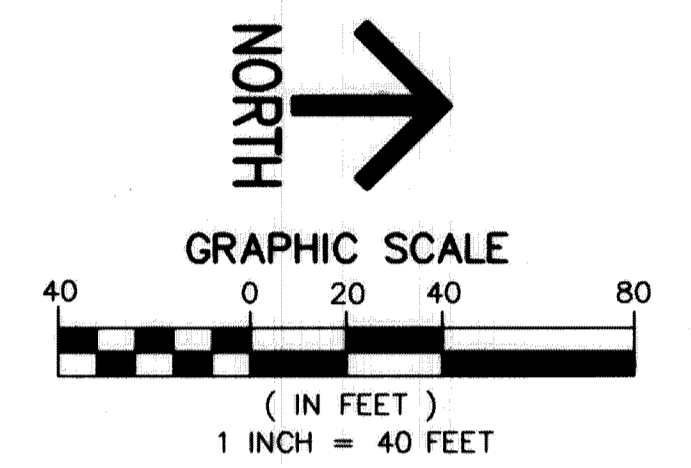
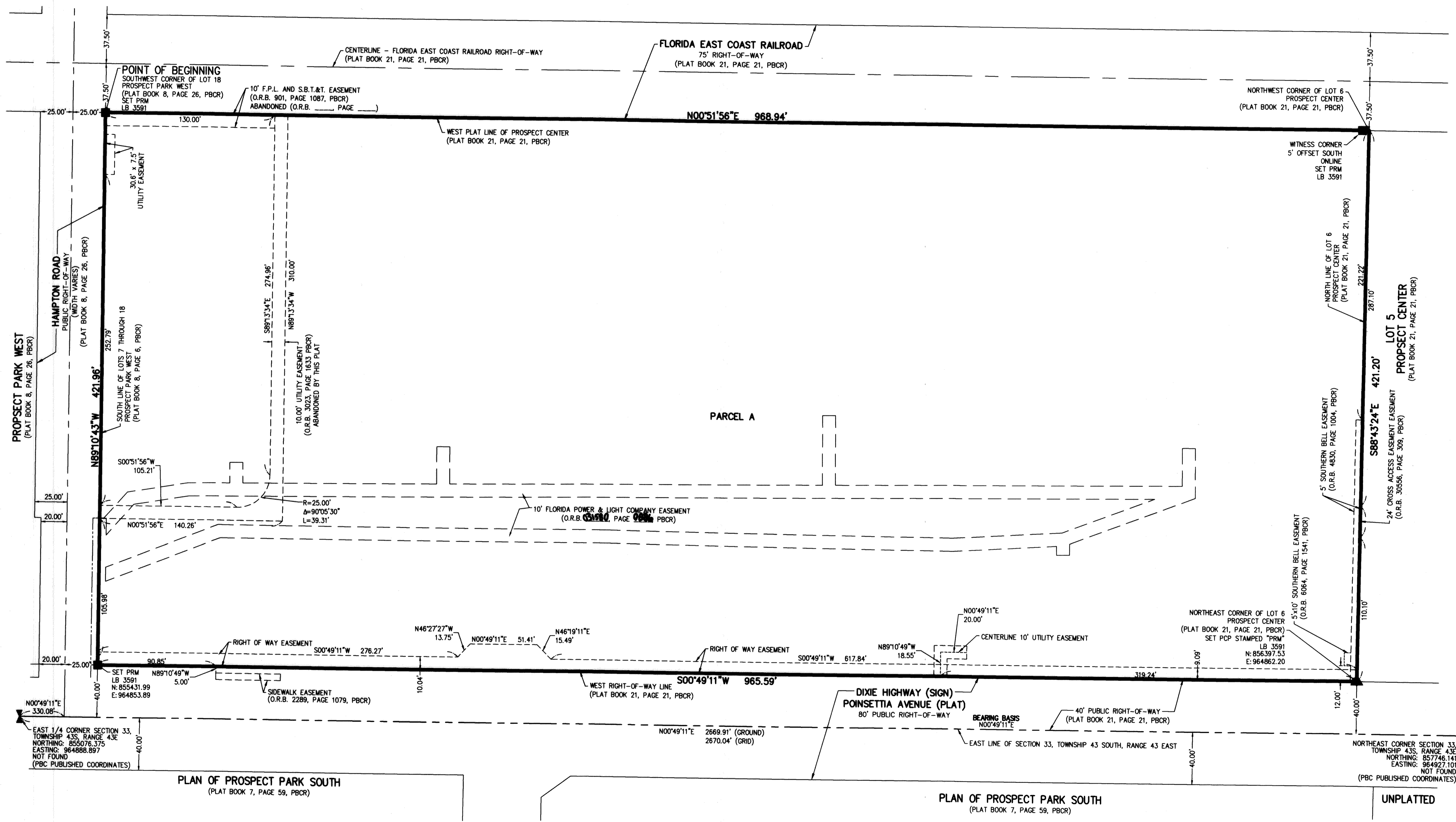
CASA MARA PLAT

BEING A REPLAT OF A PORTION OF PROSPECT CENTER, ACCORDING TO THE PLAT THEREOF, AS RECORDED IN PLAT BOOK 21, PAGE 21, PUBLIC RECORDS OF PALM BEACH COUNTY, FLORIDA, AND A PORTION OF PROSPECT PARK WEST, ACCORDING TO THE PLAT THEREOF, AS RECORDED IN PLAT BOOK 8, PAGE 26, PUBLIC RECORDS OF PALM BEACH COUNTY FLORIDA, LYING IN SECTION 33, TOWNSHIP 43 SOUTH, RANGE 43 EAST, CITY OF WEST PALM BEACH, PALM BEACH COUNTY, FLORIDA

"NOTICE" THIS PLAT, AS RECORDED IN ITS GRAPHIC FORM, IS THE OFFICIAL DEPICTION OF THE SUBDIVIDED LANDS DESCRIBED HEREIN AND WILL IN NO CIRCUMSTANCES BE SUPPLANTED IN AUTHORITY BY ANY OTHER GRAPHIC OR DIGITAL FORM OF THE PLAT. THERE MAY BE ADDITIONAL RESTRICTIONS THAT ARE NOT RECORDED ON THIS PLAT THAT MAY BE FOUND IN THE PUBLIC RECORDS OF PALM BEACH COUNTY.

161

SHEET 2 OF 2



- SURVEY NOTES AND LEGEND:**
- IN THOSE CASES WHERE EASEMENTS OF DIFFERENT TYPES CROSS OR OTHERWISE COINCIDE, DRAINAGE EASEMENTS SHALL HAVE FIRST PRIORITY, UTILITY EASEMENTS SHALL HAVE SECOND PRIORITY, ACCESS EASEMENTS SHALL HAVE THIRD PRIORITY, AND ALL OTHER EASEMENTS SHALL BE SUBORDINATE TO THESE WITH THEIR PRIORITIES BEING DETERMINED BY USE RIGHTS GRANTED.
 - BUILDING SETBACK LINES SHALL BE AS REQUIRED BY CURRENT CITY OF WEST PALM BEACH ZONING REGULATIONS.
 - NO BUILDINGS OR ANY KIND OF CONSTRUCTION OR TREES OR SHRUBS SHALL BE PLACED ON DRAINAGE EASEMENTS, EXCEPT DRIVEWAYS.
 - APPROVAL OF LANDSCAPING ON UTILITY EASEMENTS, SHALL BE ONLY WITH APPROVAL OF ALL UTILITIES OCCUPYING SAME.
 - O.R.B. - OFFICIAL RECORD BOOK
 - PBC - PALM BEACH COUNTY
 - PBCR - PALM BEACH COUNTY RECORDS
 - PRM - INDICATES SET PERMANENT REFERENCE MONUMENT MARKED LB3591, UNLESS NOTED OTHERWISE
 - PCP - INDICATES SET NAIL WITH DISC STAMPED "PRM"
 - LINES INTERSECTING CURVES ARE NON-RADIAL UNLESS SHOWN OTHERWISE.
 - BEARINGS SHOWN HEREON ARE RELATIVE TO THE THE FLORIDA STATE PLANE COORDINATE SYSTEM, EAST ZONE, NAD83, 1990 ADJUSTMENT BASED ON THE EAST LINE OF SECTION 33, TOWNSHIP 43 SOUTH, RANGE 43 EAST BEARING $N00^{\circ}49'11''E$.
 - "NOTICE" THIS PLAT, AS RECORDED IN ITS GRAPHIC FORM, IS THE OFFICIAL DEPICTION OF THE SUBDIVIDED LANDS DESCRIBED HEREIN AND WILL IN NO CIRCUMSTANCES BE SUPPLANTED IN AUTHORITY BY ANY OTHER GRAPHIC OR DIGITAL FORM OF THE PLAT. THERE MAY BE ADDITIONAL RESTRICTIONS THAT ARE NOT RECORDED ON THIS PLAT THAT MAY BE FOUND IN THE PUBLIC RECORDS OF PALM BEACH COUNTY.
 - F.P.L. - FLORIDA POWER AND LIGHT COMPANY
 - S.B.T.&T. - SOUTHERN BELL TELEPHONE AND TELEGRAPH COMPANY